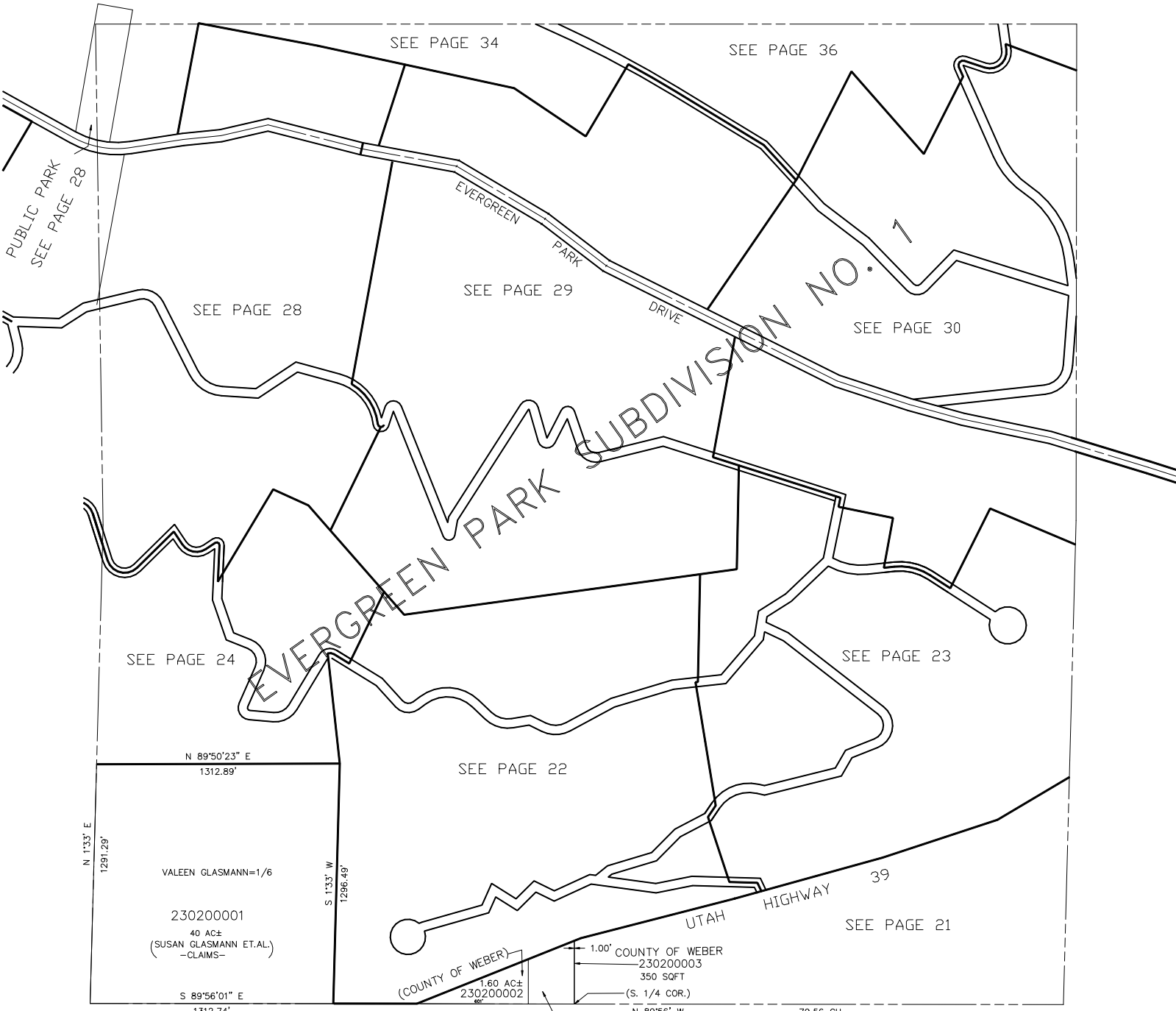


SECTION 32, T.7N., R.3E., S.L.B. & M.
 IN WEBER COUNTY
 SCALE 1" = 400'

TAXING UNIT: 58



NOTE: SEE GOV. LAND OFFICE
 DEPENDENT RESURVEY. NOT OFFICIALLY
 RECORDED IN THIS OFFICE, BUT FILED
 IN PLAT BOOK 12, PAGE 18 (ORIGINALS)
 FOR REFERENCE PURPOSES.